

BALDOR® • RELIANCE 

Product Information Packet

VJPFPM2535T

30//25HP, 1770//1470RPM, 3PH, 60//50HZ, 286J

Part Detail							
Revision:	F	Status:	PRD/A	Change #:		Proprietary:	No
Type:	AC	Elec. Spec:	40WGX324	CD Diagram:	CD0104	Mfg Plant:	
Mech. Spec:	40E282	Layout:	40LYE282	Poles:	04	Created Date:	01-13-2016
Base:	N	Eff. Date:	08-22-2018	Leads:	12#10		

Specs			
Catalog Number:	VJPFPM2535T	Heater Indicator:	No Heater
Enclosure:	OPSB	Insulation Class:	F
Frame:	286JP	Inverter Code:	Not Inverter
Frame Material:	Steel	KVA Code:	G
Output @ Frequency:	25.000 HP @ 50 HZ	Lifting Lugs:	Standard Lifting Lugs
	30.000 HP @ 60 HZ	Locked Bearing Indicator:	Locked Bearing
Synchronous Speed @ Frequency:	1500 RPM @ 50 HZ	Motor Lead Quantity/Wire Size:	12 @ 10 AWG
Voltage @ Frequency:	460.0 V @ 60 HZ	Motor Lead Exit:	Ko Box
	380.0 V @ 50 HZ	Motor Lead Termination:	Flying Leads
	230.0 V @ 60 HZ	Motor Type:	4052M
	190.0 V @ 50 HZ	Mounting Arrangement:	F1
Agency Approvals:	CSA EEV	Power Factor:	84
	UL	Product Family:	Fire Pump Motor
Auxillary Box:	No Auxillary Box	Pulley End Bearing Type:	Ball
Auxillary Box Lead Termination:	None	Pulley Face Code:	C-Face
Base Indicator:	No Mounting	Pulley Shaft Indicator:	Tapped & Key
Bearing Grease Type:	Polyrex EM (-20F +300F)	Rodent Screen:	Included
Blower:	None	Shaft Extension Location:	Pulley End

Current @ Voltage:	72.000 A @ 230.0 V	Shaft Ground Indicator:	No Shaft Grounding
	72.000 A @ 190.0 V	Shaft Rotation:	Reversible
	36.000 A @ 460.0 V	Shaft Slinger Indicator:	Shaft Slinger
	36.000 A @ 380.0 V	Speed Code:	Single Speed
Design Code:	B	Motor Standards:	NEMA
Drip Cover:	Drip Cover	Starting Method:	Wye Start - Delta Run
Duty Rating:	CONT	Thermal Device - Bearing:	None
Electrically Isolated Bearing:	Not Electrically Isolated	Thermal Device - Winding:	None
Feedback Device:	NO FEEDBACK	Vibration Sensor Indicator:	No Vibration Sensor
Front Face Code:	Drip Cover Mounting	Winding Thermal 1:	None
Front Shaft Indicator:	None	Winding Thermal 2:	None

Nameplate NP3454L											
CAT.NO.	VJPFPM2535T			CUST P/N				I.P.	23		
SPEC.	40E282X324H2			SER.NO.				FRAME	286JP		
HZ	60	HP	30	RPM	1770	HZ	50	HP	25	RPM	1470
VOLTS	230/460			CODE	G	VOLTS	190/380			CODE	F
AMPS	72/36			DES	B	AMPS	72/36			DES	B
EFF	92.4	SER.F.	1.15	PF	84	EFF	92.4	SER.F.	1.15	PF	84
RATING	40C AMB-CONT			DE BRG	6312			GREASE	POLYREX EM		
BLANK				ODE BRG	6309			MTR. WT.	375		
				CLASS	F			PH	3		
				ENCL	OPSB			CC	010A		
HTR-VOLTS		HTR-AMPS		HTR-WATTS							

Parts List		
Part Number	Description	Quantity
SA313507	SA 40E282X324H2	1.000 EA
RA300969	RA 40E282X324H2	1.000 EA
HA6017	CAST ADAPTER, 40,42 KOBX	1.000 EA
19XW3118A12	.31-18 X .75 HEX WASHER HEAD TAPTITE II	2.000 EA
HW1001A31	LOCKWASHER 5/16, ZINC PLT.591 OD, .319 I	2.000 EA
WD1000B25	GND LUG, BURNDY L125HP OR T&B L125HP-BB	1.000 EA
19XW3118G08	.31-18X.50,HEX WSHR HD,TAPTITE 2,GREEN	1.000 EA
10CB3000SP	KOBX, CAST W/2.00 LEAD HOLE	1.000 EA
19XW3118A12	.31-18 X .75 HEX WASHER HEAD TAPTITE II	4.000 EA
HW1001A31	LOCKWASHER 5/16, ZINC PLT.591 OD, .319 I	4.000 EA
40EP3200A01	STD FREP OPEN 309 BRG W/DRIP COVER	1.000 EA
HW5100A11	W3917-042 WVY WSHR (WB)	1.000 EA
HA1166A02	RODENT SCREEN FOR 40 ENDPLATE 40EP1300A.	1.000 EA
51XW1032A06	10-32 X .38, TAPTITE II, HEX WSHR SLTD S	4.000 EA
40EP1300A01	PU ENDPLATE, MACH	1.000 EA
HA2009A03	SLINGER, ALUMINUM, (AUTO)ANODIZED ALUM	1.000 EA
80XN1032A06	10-32 X 3/8 SET SC HEX SOCK	1.000 EA
HA1166A02	RODENT SCREEN FOR 40 ENDPLATE 40EP1300A.	1.000 EA
51XW1032A06	10-32 X .38, TAPTITE II, HEX WSHR SLTD S	4.000 EA
10XN3118K40	5/16-18 X 2.50" HEX HD, GRADE 5	4.000 EA
HW1001A31	LOCKWASHER 5/16, ZINC PLT.591 OD, .319 I	4.000 EA
HA7205	"L" SHAPE LIFTING LUG FOR 37,39 & 40 FRA	2.000 EA
HW1001A38	LOCKWASHER 3/8, ZINC PLT .688 OD, .382 I	4.000 EA
10CB3500SP	CONDUIT BOX LID, CAST	1.000 EA

Parts List (continued)		
Part Number	Description	Quantity
51XW2520A12	.25-20 X .75, TAPTITE II, HEX WSHR SLTD	4.000 EA
HW2501E18	KEY, 1/4 SQ X 2.000	1.000 EA
LB1115N	LABEL,LIFTING DEVICE (ON ROLLS)	1.000 EA
LB1182	WARNING LABEL FOR MOTORS WITH EYENUTS	2.000 EA
40FH2500A01	SP'L DRIP COVER MODEL 40- OPEN	1.000 EA
10XN2520K12	1/4-20 X.75 GRD 5	2.000 EA
HW4500A03	GREASE FITTING, .125 NPT 1610(ALEMITE) 8	1.000 EA
HW4500A17	317400 ALEMITE GREASE RELIEF	1.000 EA
HA4051A00	PLASTIC CAP FOR GREASE FITTING	1.000 EA
MG1025R44	WILKOFASST, 784.109, CARMINE RED #3002	0.050 GA
MJ1000A02	GREASE, MOBIL POLYREX EM - 124047	0.050 LB
HW4500A03	GREASE FITTING, .125 NPT 1610(ALEMITE) 8	1.000 EA
HW4500A17	317400 ALEMITE GREASE RELIEF	1.000 EA
HA4051A00	PLASTIC CAP FOR GREASE FITTING	1.000 EA
85XU0407S04	4X1/4 U DRIVE PIN STAINLESS	2.000 EA
HA3113A06	THRUBOLT 3/8 - 16 X 18.000	4.000 EA
40AD2002A01	LEXAN BAFFLE 40 FR OPEN	1.000 EA
40AD2002A01	LEXAN BAFFLE 40 FR OPEN	1.000 EA
LB1119N	WARNING LABEL	1.000 EA
LC0104A01	CONNECTION DIAGRAM	1.000 EA
NP3454L	ALUM FIRE PUMP MOTOR(LEGACY/BALDOR ONLY)	1.000 EA
42PA1000	PACKAGING GROUP PRINT PK1024A06	1.000 EA
MN416A01	TAG-INSTAL-MAINT no wire (1200/bx) 3/19	1.000 EA

AC Induction Motor Performance Data

Record # 54887 - Typical performance - not guaranteed values

Winding: 40WGX324-R001	Type: 4052M	Enclosure: OPEN
-------------------------------	--------------------	------------------------

Nameplate Data				460 V, 60 Hz: High Voltage Connection	
Rated Output (HP)	30//25			Full Load Torque	89.5 LB-FT
Volts	230/460//190/380			Start Configuration	direct on line
Full Load Amps	72/36			Breakdown Torque	258 LB-FT
R.P.M.	1770//1470			Pull-up Torque	113 LB-FT
Hz	60//50	Phase	3	Locked-rotor Torque	143 LB-FT
NEMA Design Code	B	KVA Code	G	Starting Current	211 A
Service Factor (S.F.)	1.15			No-load Current	13 A
NEMA Nom. Eff.	92.4	Power Factor	84	Line-line Res. @ 25°C	0.26526 Ω
Rating - Duty	40C AMB-CONT			Temp. Rise @ Rated Load	32°C
S.F. Amps				Temp. Rise @ S.F. Load	40°C
				Locked-rotor Power Factor	31.4

Load Characteristics 460 V, 60 Hz, 30 HP

% of Rated Load	25	50	75	100	125	150	S.F.
Power Factor	51	72	80	84	85	85	85
Efficiency	90.4	93.4	93.9	93.6	92.8	91.9	93.1
Speed	1792.8	1786.6	1780	1773.1	1765.1	1756.4	1768
Line amperes	15.6	20.9	27.9	35.9	44.5	53.9	41.1

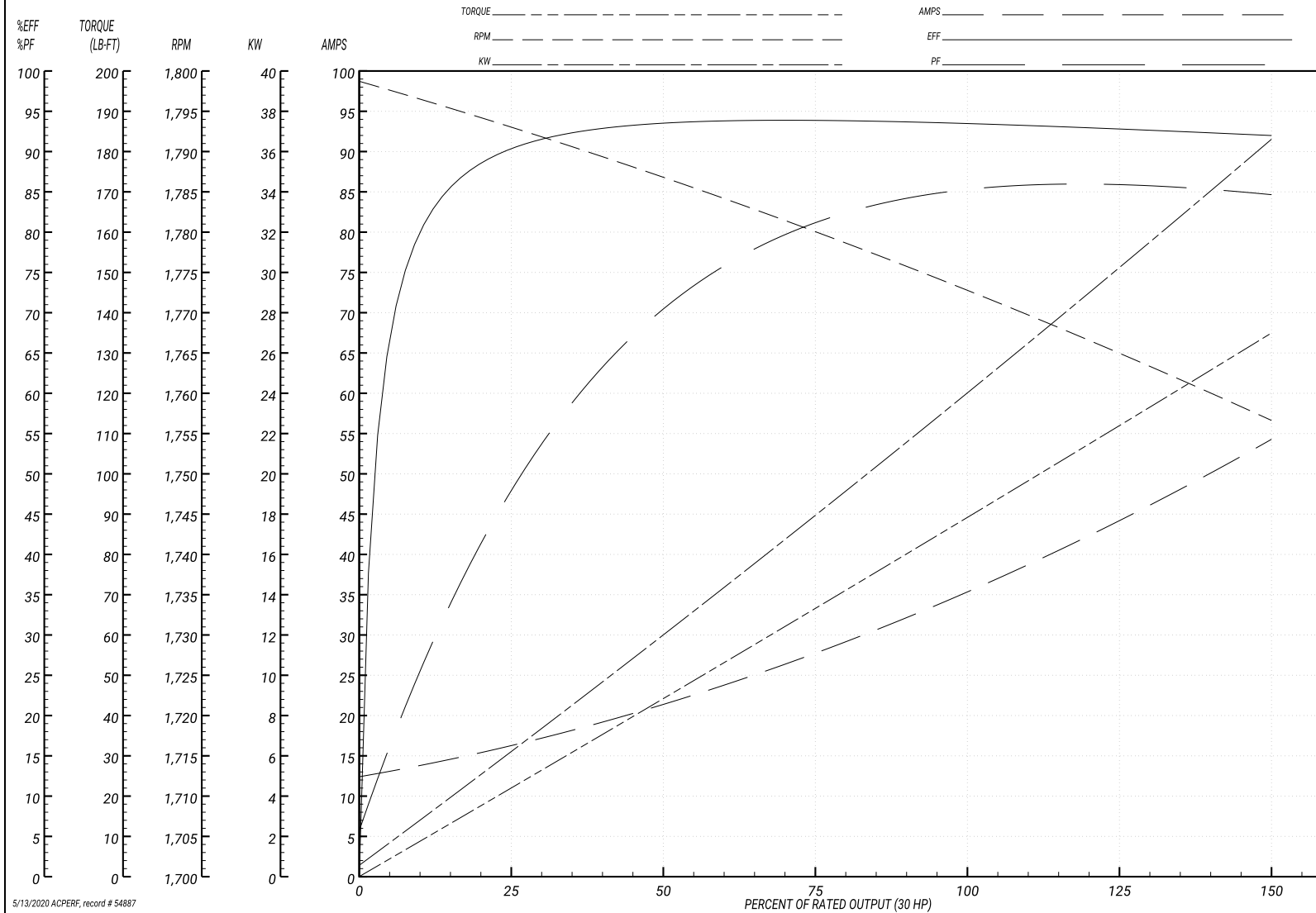
Performance Graph at 460V, 60Hz, 30.0HP Typical performance - Not guaranteed values

ABB Motors and Mechanical Inc.

WINDING # 40WGX324

Typical performance - not guaranteed values.

30 HP 3 PH 60 HZ 1773.1 RPM 460 V 4052M
 TORQUES(LB-FT): PO=258 PU=113 LR=143 LRA=211



5/13/2020 ACPERF, record # 54887

AC Induction Motor Performance Data

Record # 54888 - Typical performance - not guaranteed values

Winding: 40WGX324-R001	Type: 4052M	Enclosure: OPEN
-------------------------------	--------------------	------------------------

Nameplate Data				380 V, 50 Hz: High Voltage Connection	
Rated Output (HP)	30//25			Full Load Torque	89.8 LB-FT
Volts	230/460//190/380			Start Configuration	direct on line
Full Load Amps	72/36			Breakdown Torque	250 LB-FT
R.P.M.	1770//1470			Pull-up Torque	116 LB-FT
Hz	60//50	Phase	3	Locked-rotor Torque	147 LB-FT
NEMA Design Code	B	KVA Code	G	Starting Current	201 A
Service Factor (S.F.)	1.15			No-load Current	12.7 A
NEMA Nom. Eff.	92.4	Power Factor	84	Line-line Res. @ 25°C	0.261 Ω
Rating - Duty	40C AMB-CONT			Temp. Rise @ Rated Load	33°C
S.F. Amps				Temp. Rise @ S.F. Load	41°C
				Locked-rotor Power Factor	34.8
				Rotor inertia	4.14 LB-FT ²

Load Characteristics 380 V, 50 Hz, 25 HP

% of Rated Load	25	50	75	100	125	150	S.F.
Power Factor	53	73	81	85	86	85	86
Efficiency	89.8	92.7	93.1	92.7	92.2	90.7	92.4
Speed	1493	1487	1480	1472	1464	1455	1467
Line amperes	15.4	20.8	28	36.3	45.2	55.2	41.6

Performance Graph at 380V, 50Hz, 25.0HP Typical performance - Not guaranteed values

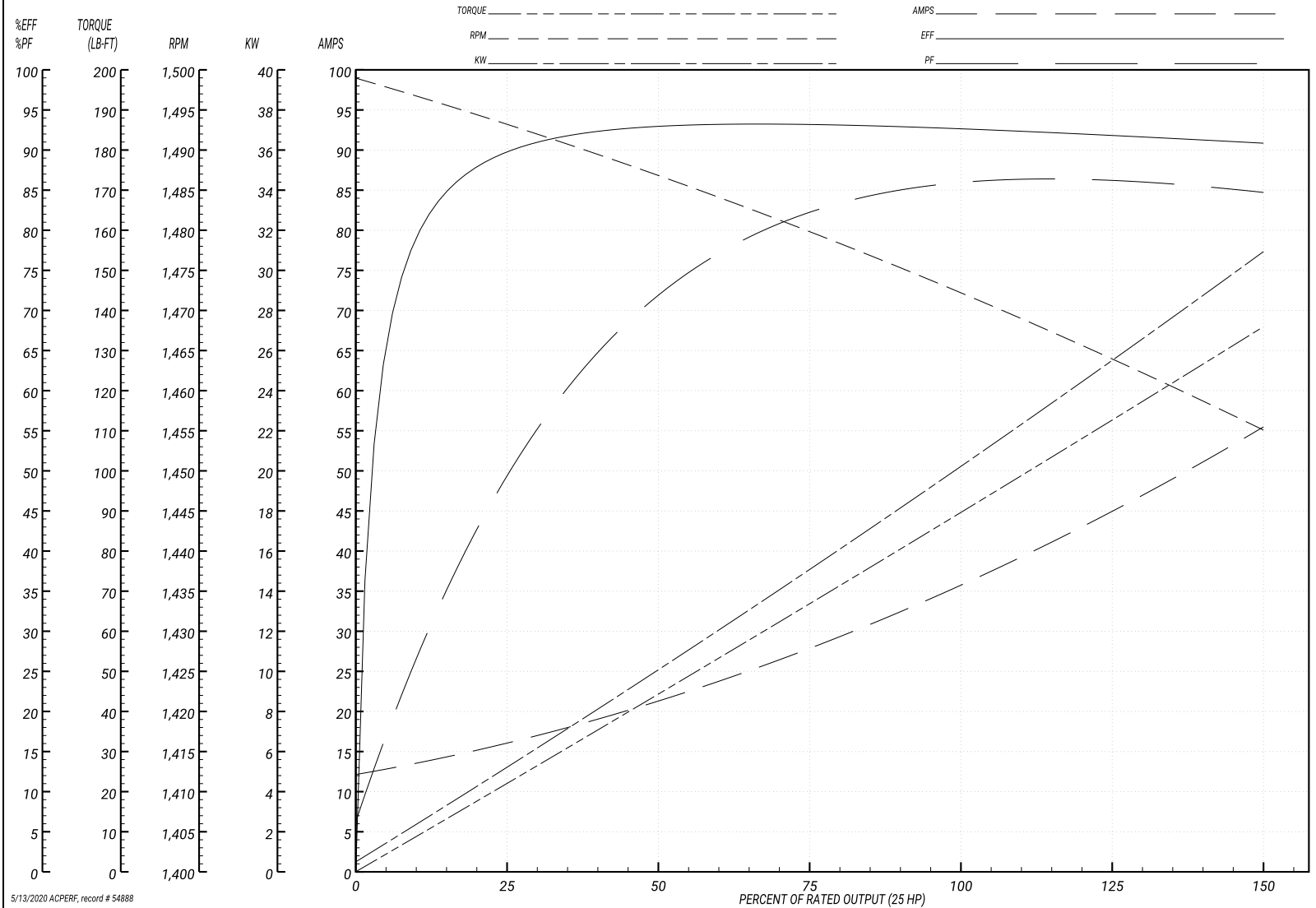
ABB Motors and Mechanical Inc.

WINDING # 40WGX324

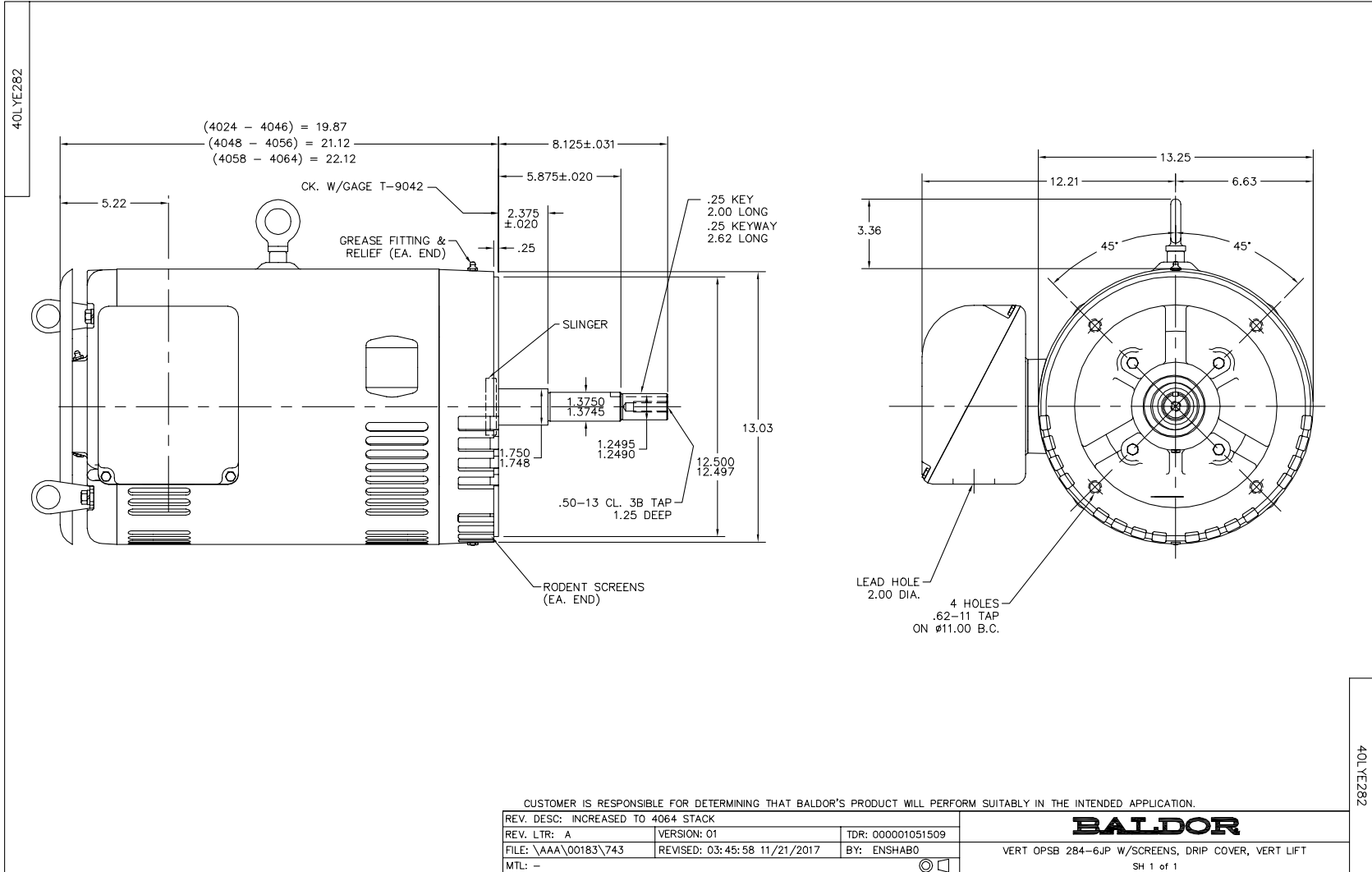
Typical performance - not guaranteed values.

25 HP 3 PH 50 HZ 1472 RPM 380 V 4052M

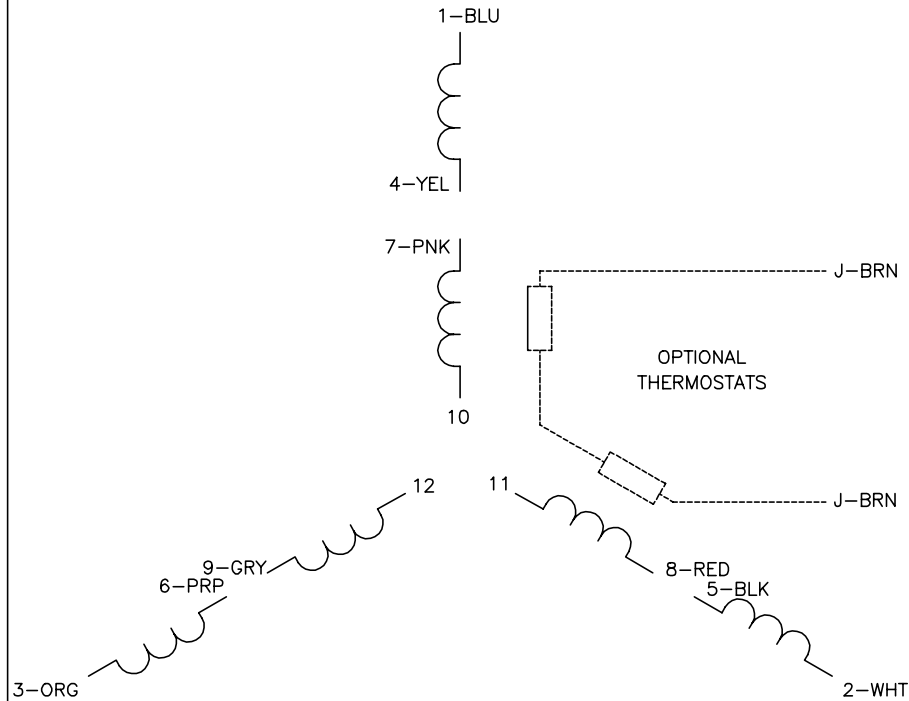
TORQUES(LB-FT): PO=250 PU=116 LR=147 LRA=201



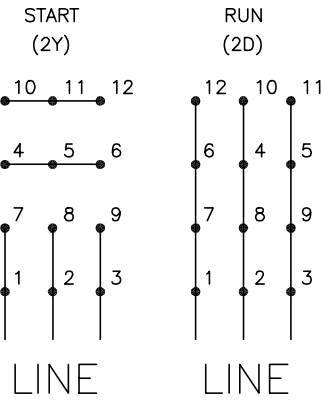
5/13/2020 ACPERF, record # 54888



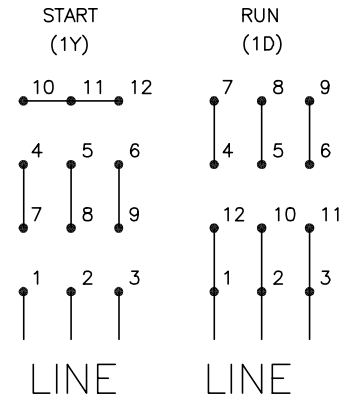
CD0104



LOW VOLTAGE



HIGH VOLTAGE



NOTES:

1. INTERCHANGE ANY TWO LINE LEADS TO REVERSE ROTATION.
2. OPTIONAL THERMOSTATS ARE PROVIDED WHEN SPECIFIED.
3. ACTUAL NUMBER OF INTERNAL PARALLEL CIRCUITS MAY BE A MULTIPLE OF THOSE SHOWN ABOVE.
4. LEAD COLORS ARE OPTIONAL. LEADS MUST ALWAYS BE NUMBERED AS SHOWN.

CD0104

REV. DESC: ADD CLASS CONN00000007		
REV. LTR: D	VERSION: 01	TDR: 000001099922
FILE: \AAA\00008\377	REVISED: 09:02:55 02/19/2019	BY: ENBRIRO
MTL: -	© □	

BALDOR - RELIANCE®

3PH, DV, 12 LEADS, Y START/D RUN

SH 1 of 1

Marketing maintained PDF of MN416:

<http://www.baldor.com/support/Literature/Load.ashx/MN416?ManNumber=MN416>